

Carbon School Education Plan 2020/2021



Achieve!
Believe!
Connect!



Vision

To develop lifelong learners that are inspired to achieve personal excellence.

Mission

Inspiring personal success by developing a culture of learning through educational experiences fostered in a safe and supportive community.

Motto

Achieve--Believe--Connect

Our Values are:

Integrity, Cooperation, Perseverance,
Empathy and Personal Excellence

Combined May 2020 Accountability Pillar Overall Summary

Measure Category	Measure	Carbon School			Alberta			Measure Evaluation		
		Current Result	Prev Year Result	Prev 3 Year Average	Current Result	Prev Year Result	Prev 3 Year Average	Achievement	Improvement	Overall
Safe and Caring Schools	Safe and Caring	76.2	87.1	89.3	89.4	89.0	89.2	Very Low	Declined Significantly	Concern
Student Learning Opportunities	Program of Studies	59.2	71.7	68.3	82.4	82.2	82.0	Very Low	Maintained	Concern
	Education Quality	75.7	93.2	93.4	90.3	90.2	90.1	Very Low	Declined Significantly	Concern
	Drop Out Rate	*	0.0	0.0	2.7	2.6	2.7	*	*	*
Student Learning Achievement (Grades K-9)	High School Completion Rate (3 yr)	n/a	n/a	n/a	79.7	79.1	78.4	n/a	n/a	n/a
	PAT: Acceptable	n/a	73.9	77.1	n/a	73.8	73.6	n/a	n/a	n/a
Student Learning Achievement (Grades 10-12)	PAT: Excellence	n/a	17.0	15.4	n/a	20.6	20.0	n/a	n/a	n/a
	Diploma: Acceptable	n/a	n/a	n/a	n/a	83.6	83.4	n/a	n/a	n/a
	Diploma: Excellence	n/a	n/a	n/a	n/a	24.0	23.5	n/a	n/a	n/a
	Diploma Exam Participation Rate (4+ Exams)	n/a	n/a	n/a	56.4	56.3	55.6	n/a	n/a	n/a
	Rutherford Scholarship Eligibility Rate	n/a	n/a	n/a	66.6	64.8	63.5	n/a	n/a	n/a
Preparation for Lifelong Learning, World of Work, Citizenship	Transition Rate (6 yr)	n/a	n/a	51.5	60.1	59.0	58.5	n/a	n/a	n/a
	Work Preparation	77.8	85.0	92.2	84.1	83.0	82.7	High	Declined	Acceptable
Parental Involvement	Citizenship	67.0	83.3	83.7	83.3	82.9	83.2	Low	Declined Significantly	Concern
	Parental Involvement	64.9	92.0	94.8	81.8	81.3	81.2	Very Low	Declined Significantly	Concern
Continuous Improvement	School Improvement	68.8	72.7	82.3	81.5	81.0	80.9	Low	Declined	Issue

Reflection

Our survey results dropped for the 2019/2020 school year. Although this was unexpected, upon review we noted a couple of contributing factors. We incurred a drop in enrollment and a significant staffing cut for this school year. In 2018/19, we had 6.125 certificated teaching staff. In 2019/20, that dropped to 4.625. As a result, we had to have some triple combined grades and even a grouping of four grades for PE and Daily Five(ELA). The numbers were manageable, but it is still a strain to provide programming in multi-graded settings. It is important to note that our teacher results are not calculated into the overall results as our number of teachers was less than six.

If we look at the data for our three year averages, we note more positive results.

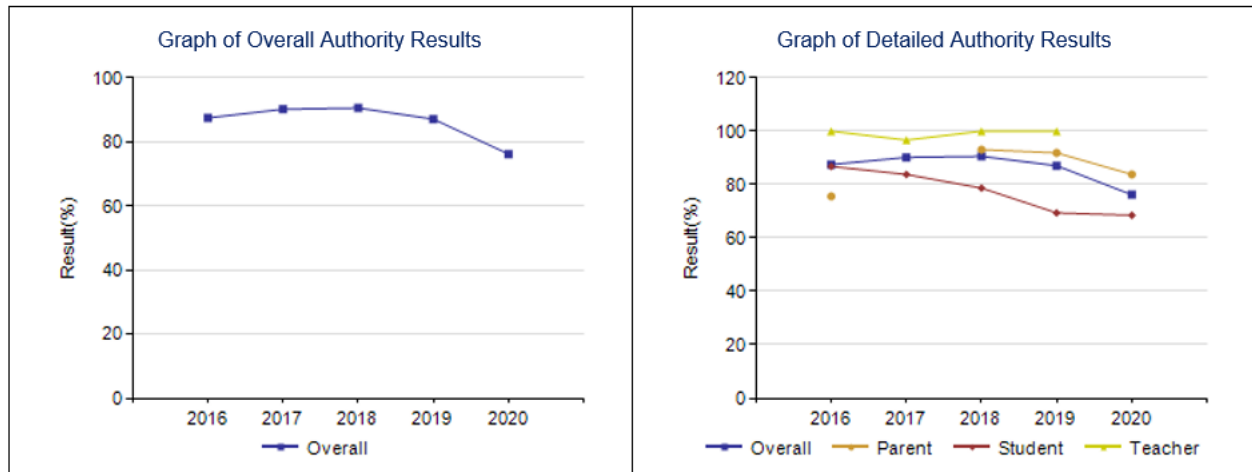
Goal Setting

Our teaching and support staff are continuously working together to create positive learning experiences for all students. Creative time tabling allows for staff to create powerful learning opportunities even in multi-graded settings. We need to do a better job of telling our story. We have been working diligently to use social media to share examples of student learning and engagement.

Safe and Caring – Measure Details

Percentage of teacher, parent and student agreement that: students are safe at school, are learning the importance of caring for others, are learning respect for others and are treated fairly in school.

	School					Authority					Province				
	2016	2017	2018	2019	2020	2016	2017	2018	2019	2020	2016	2017	2018	2019	2020
Overall	87.5	90.2	90.6	87.1	76.2	90.9	91.2	90.6	90.6	90.0	89.5	89.5	89.0	89.0	89.4
Teacher	100.0	96.7	100.0	100.0	*	96.7	96.9	97.5	96.8	96.9	95.4	95.3	95.0	95.1	95.3
Parent	75.6	*	93.1	91.9	83.8	89.2	90.3	89.8	91.5	87.7	89.8	89.9	89.4	89.7	90.2
Student	86.8	83.8	78.7	69.4	68.5	86.8	86.5	84.6	83.6	85.5	83.4	83.3	82.5	82.3	82.6



Reflection

A drop was noted in the Safe and Caring School section, particularly from the parent surveys.

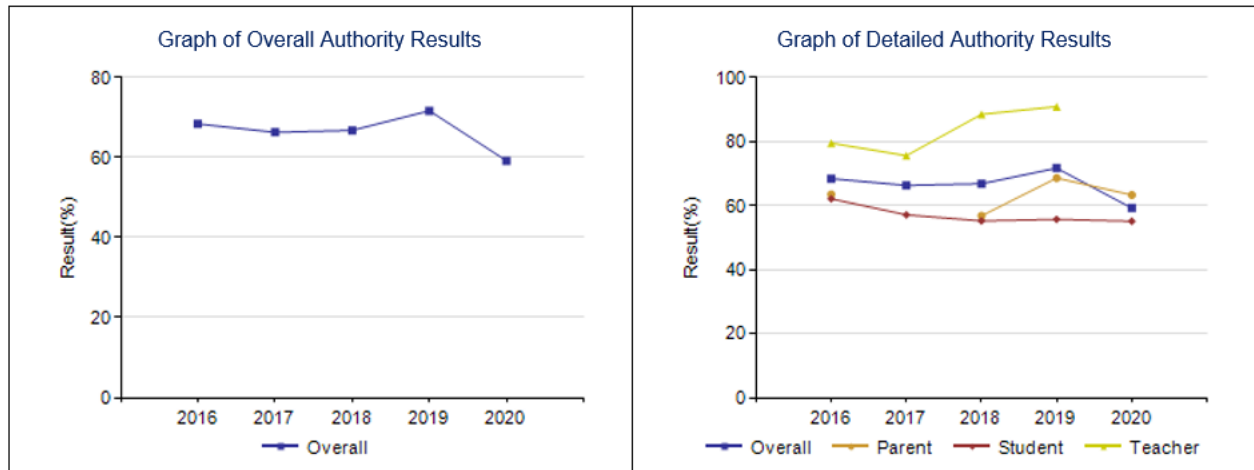
Goal Setting

Staff is committed to creating positive home school communication. This was clearly demonstrated during the suspension of classes last spring. Parents appreciated the efforts from all staff members to inform and support students and parents. We also hope that a consistent presence in the role of Family Wellness Worker in our school will improve these results as well.

Program of Studies – Measure Details

Percentage of teachers, parents and students satisfied with the opportunity for students to receive a broad program of studies including fine arts, career, technology, and health and physical education.

	School					Authority					Province				
	2016	2017	2018	2019	2020	2016	2017	2018	2019	2020	2016	2017	2018	2019	2020
Overall	68.4	66.3	66.8	71.7	59.2	79.6	81.1	79.0	81.0	81.2	81.9	81.9	81.8	82.2	82.4
Teacher	79.5	75.6	88.5	90.9	*	84.5	87.8	88.0	85.7	89.7	88.1	88.0	88.4	89.1	89.3
Parent	63.5	*	56.8	68.6	63.3	77.3	77.7	76.0	79.2	75.4	80.1	80.1	79.9	80.1	80.1
Student	62.1	57.1	55.2	55.7	55.1	77.1	77.7	73.1	78.2	78.4	77.5	77.7	77.2	77.4	77.8



Reflection

A drop was noted in the Program of Studies section. This has typically been a lower area for us. We do not always have the opportunity to offer programming such as a second language, music and drama.

Goal Setting

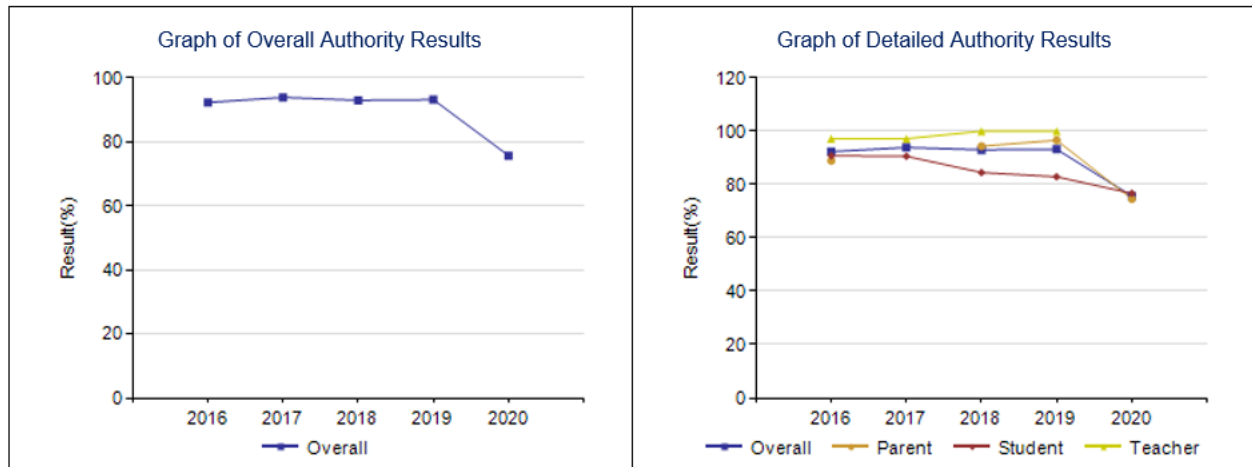
Carbon School commits to finding ways to offer programming outside of the school day when it is not possible within our school day. A STEAM club was set up at lunch time last year. A whole school drama and music performance was produced at Christmas last year.

Wonder Wednesday for Junior High students allows students to choose an interest or passion to pursue facilitated by a teacher. Community members are often involved to share their skills.

Education Quality – Measure Details

Percentage of teachers, parents and students satisfied with the overall quality of basic education.

	School					Authority					Province				
	2016	2017	2018	2019	2020	2016	2017	2018	2019	2020	2016	2017	2018	2019	2020
Overall	92.3	93.9	93.0	93.2	75.7	92.1	92.4	92.0	92.1	91.4	90.1	90.1	90.0	90.2	90.3
Teacher	97.2	97.2	100.0	100.0	*	98.0	98.3	97.8	98.1	97.8	96.0	95.9	95.8	96.1	96.4
Parent	88.9	*	94.4	96.6	74.6	87.9	88.4	87.8	88.7	86.6	86.1	86.4	86.0	86.4	86.7
Student	90.8	90.6	84.5	82.9	76.7	90.5	90.5	90.3	89.6	89.8	88.0	88.1	88.2	88.1	87.8



Reflection

A drop was noted in the Education Quality, especially in the parent results. This was a surprising decline. The drop in staff may have contributed to these results.

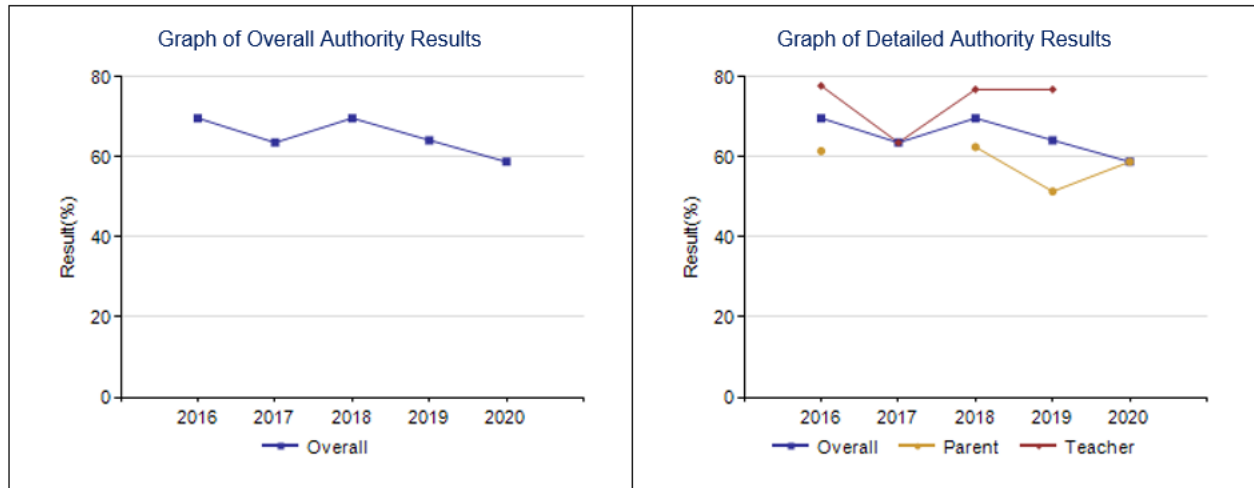
Goal Setting

Carbon School staff are continually engaged in professional development to improve practice. Further education includes individual online PD, group PD and some staff have and are currently pursuing masters programs.

Lifelong Learning – Measure Details

Percentage of teacher and parent satisfaction that students demonstrate the knowledge, skills and attitudes necessary for lifelong learning.

	School					Authority					Province				
	2016	2017	2018	2019	2020	2016	2017	2018	2019	2020	2016	2017	2018	2019	2020
Overall	69.7	63.6	69.7	64.2	58.8	74.6	75.1	73.6	74.2	74.0	70.7	71.0	70.9	71.4	72.6
Teacher	77.8	63.6	76.9	76.9	*	82.2	81.6	83.2	84.1	84.5	77.3	77.3	77.8	78.8	80.6
Parent	61.5	*	62.5	51.4	58.8	67.1	68.5	64.1	64.3	63.5	64.2	64.8	64.0	64.0	64.6



Reflection

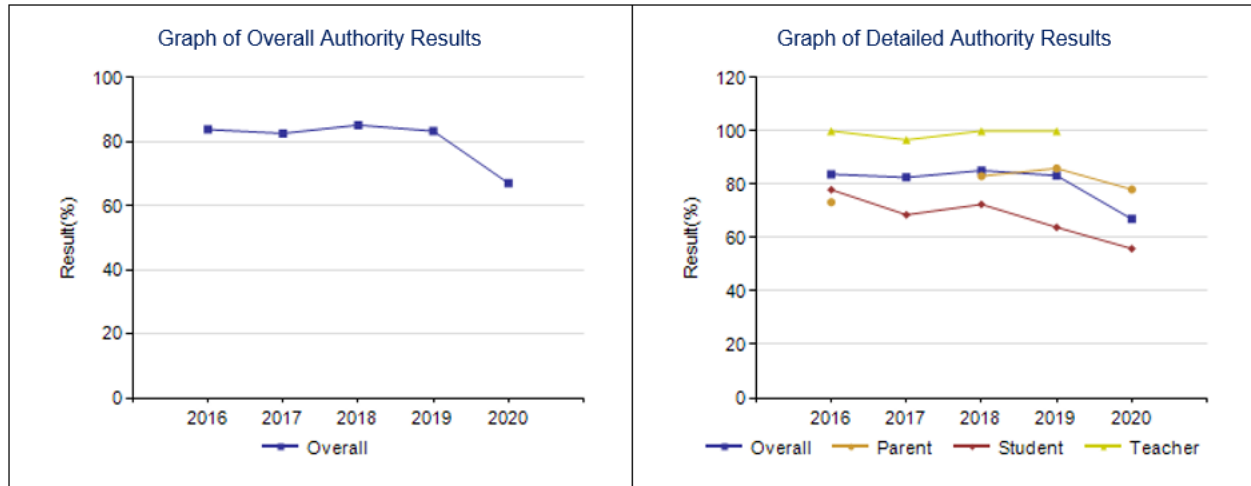
Although there was a slight overall drop in this area, the parent results increased a bit.

Goal Setting

Carbon School offers areas of study in the Career and Technology Foundations stream. Junior High students will participate in activities involving 3-D printing, online portfolio development and digital citizenship. We are very proud of our shop program.

Citizenship – Measure Details

Percentage of teachers, parents and students who are satisfied that students model the characteristics of active citizenship.															
	School					Authority					Province				
	2016	2017	2018	2019	2020	2016	2017	2018	2019	2020	2016	2017	2018	2019	2020
Overall	83.8	82.6	85.2	83.3	67.0	84.0	86.0	85.6	84.8	83.3	83.9	83.7	83.0	82.9	83.3
Teacher	100.0	96.7	100.0	100.0	*	94.5	96.3	96.7	95.6	94.9	94.5	94.0	93.4	93.2	93.6
Parent	73.3	*	83.1	86.0	78.1	80.1	82.8	82.1	82.9	79.0	82.9	82.7	81.7	81.9	82.4
Student	78.0	68.6	72.5	63.9	55.9	77.4	78.9	77.9	75.9	76.1	74.5	74.4	73.9	73.5	73.8



Reflection

A significant drop was noted in the area of Citizenship, especially with the student results.

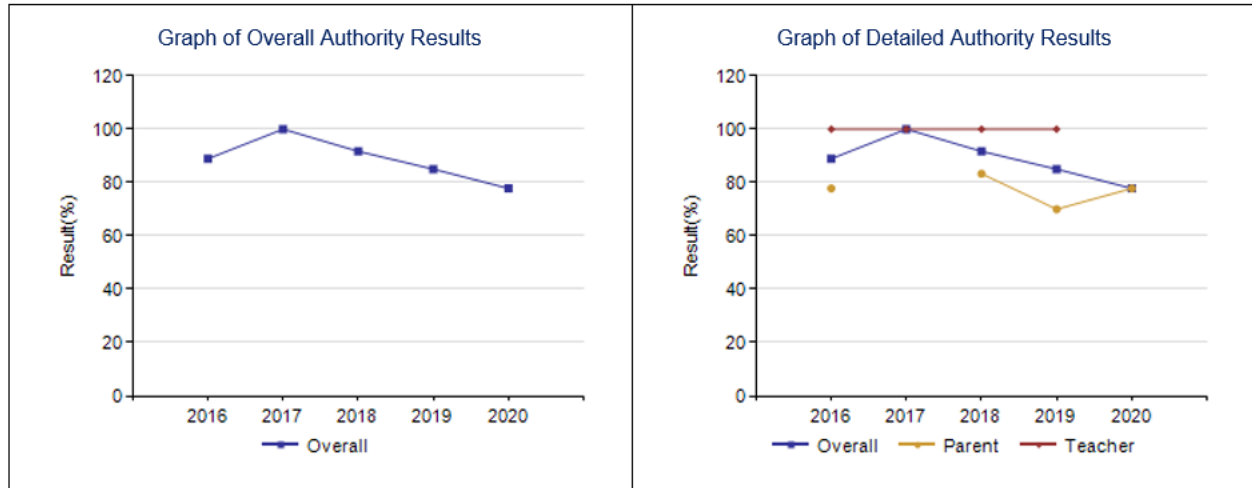
Goal Setting

Mental health and wellness continues to be a primary focus for Carbon School staff. We understand the importance of connection with each other and our students. During the suspension of classes staff participated in Dr Jody Carrington's online Kid's These Days book study accompanied by videos. We brainstormed after each lesson to plan for the 2020/2021 school year. These plans focussed on developing self regulation and connection.

Work Preparation – Measure Details

Percentage of teachers and parents who agree that students are taught attitudes and behaviours that will make them successful at work when they finish school.

	School					Authority					Province				
	2016	2017	2018	2019	2020	2016	2017	2018	2019	2020	2016	2017	2018	2019	2020
Overall	88.9	100.0	91.7	85.0	77.8	85.5	82.3	85.1	86.0	86.0	82.6	82.7	82.4	83.0	84.1
Teacher	100.0	100.0	100.0	100.0	*	94.4	92.2	94.0	95.7	99.3	90.5	90.4	90.3	90.8	92.2
Parent	77.8	*	83.3	70.0	77.8	76.6	72.5	76.3	76.4	72.6	74.8	75.1	74.6	75.2	76.0



Reflection

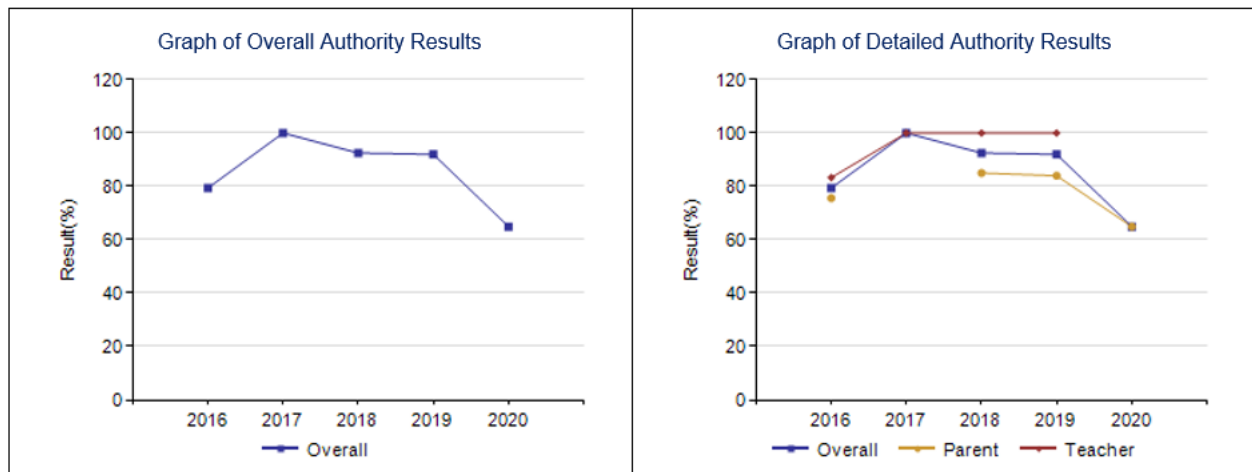
A drop was noted for the student results, our parent survey data increased for the 2019/2020 school year.

Goal Setting

Programming that allows for student choice and life long learning skills is key. Carbon School is determined to provide as many of these powerful learning opportunities as possible. When safe to do so, we will actively reach out to community members to tap the expertise and passion in the Village of Carbon and surrounding areas.

Parental Involvement – Measure Details

Percentage of teachers and parents satisfied with parental involvement in decisions about their child's education.															
	School					Authority					Province				
	2016	2017	2018	2019	2020	2016	2017	2018	2019	2020	2016	2017	2018	2019	2020
Overall	79.4	100.0	92.5	92.0	64.9	80.3	84.4	81.6	82.5	80.5	80.9	81.2	81.2	81.3	81.8
Teacher	83.3	100.0	100.0	100.0	*	87.8	91.5	90.0	92.1	90.2	88.4	88.5	88.9	89.0	89.6
Parent	75.6	*	85.0	84.0	64.9	72.8	77.3	73.1	72.8	70.7	73.5	73.9	73.4	73.6	73.9



Reflection

A significant drop was noted from both the parent and student results. Although this is an anomaly, we avow to discuss it as a staff and brainstorm ways to improve these results.

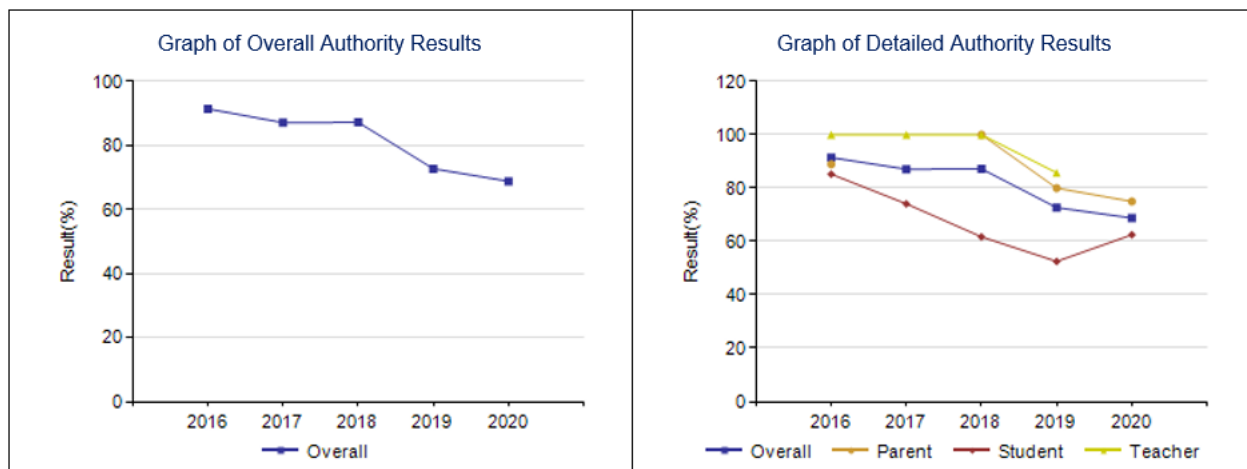
Goal Setting

Carbon School has a very active Parent Advisory Council that supports student learning in many ways. They provide funding for many things such as teacher and student resources and healthy snacks. Extra curricular activities and transportation are also promoted by this group. PAC actively communicates with the teachers at Carbon School to promote student learning and achievement.

School Improvement – Measure Details

Percentage of teachers, parents and students indicating that their school and schools in their jurisdiction have improved or stayed the same the last three years.

	School					Authority					Province				
	2016	2017	2018	2019	2020	2016	2017	2018	2019	2020	2016	2017	2018	2019	2020
Overall	91.4	87.1	87.2	72.7	68.8	86.3	88.0	83.0	84.7	84.3	81.2	81.4	80.3	81.0	81.5
Teacher	100.0	100.0	100.0	85.7	*	90.3	88.5	86.2	85.5	90.1	82.3	82.2	81.5	83.4	85.0
Parent	88.9	*	100.0	80.0	75.0	81.7	88.5	79.3	84.0	77.5	79.7	80.8	79.3	80.3	80.0
Student	85.2	74.1	61.7	52.5	62.5	86.8	86.9	83.4	84.4	85.4	81.5	81.1	80.2	79.4	79.6

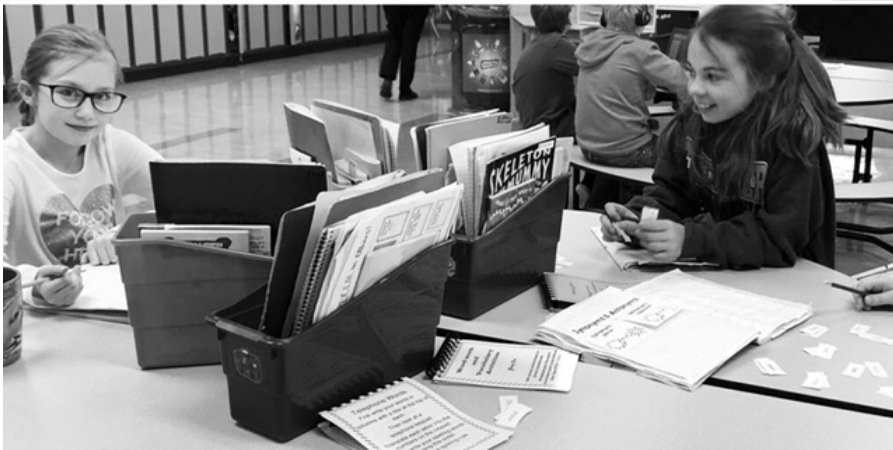


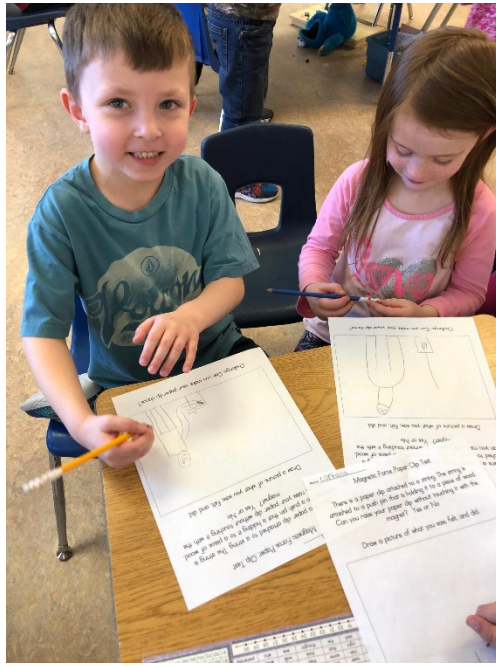
Reflection

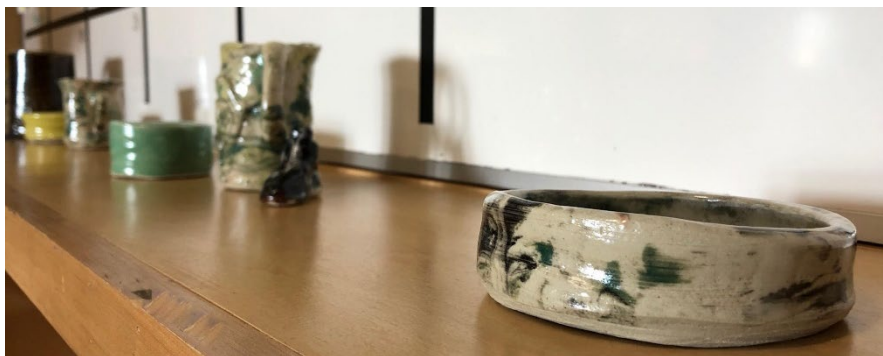
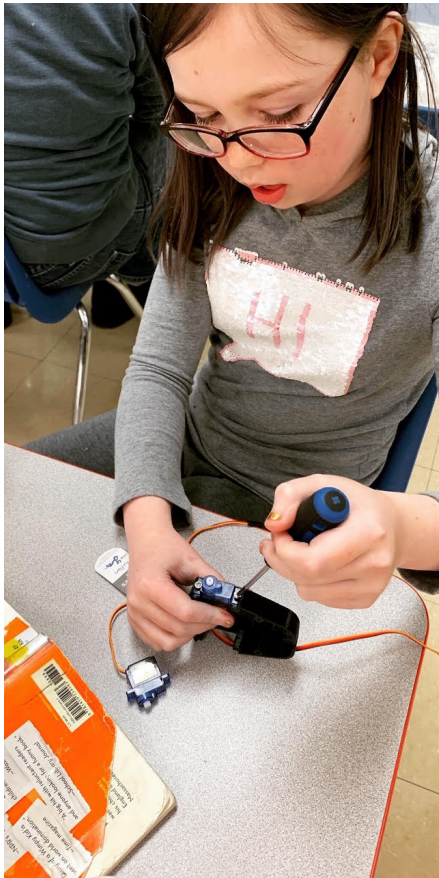
Although the overall results dropped in the area of School Improvement, student results actually improved. A decline over the last three years is noted.

Goal Setting

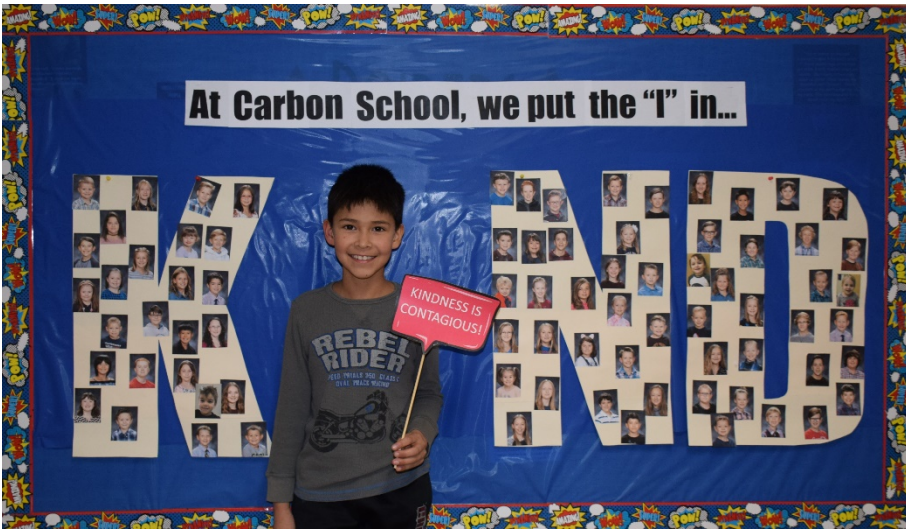
Carbon School staff will continue to actively tell our story to our school family and community members. We want to work with community groups and individuals to promote not only our school, but our entire community. Connection through social media will continue to be a focus.













A C
C O
H N
I N
B E L I E V E
V C
E T

