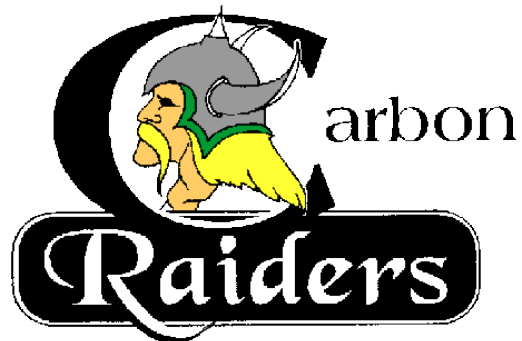


---

# *Carbon School Education Plan 2019/2020*



---

# **Carbon School**

## **Vision**

**To develop lifelong learners that are inspired to achieve personal excellence.**

## **Mission**

**Inspiring personal success by developing a culture of learning through educational experiences fostered in a safe and supportive community.**

## **Values**

**Integrity, Cooperation, Empathy, Perseverance and Personal Excellence**

**Achieve! Believe! Connect!**

### Combined 2019 Accountability Pillar Overall Summary

Measure Category	Measure	Carbon School			Alberta			Measure Evaluation		
		Current Result	Prev Year Result	Prev 3 Year Average	Current Result	Prev Year Result	Prev 3 Year Average	Achievement	Improvement	Overall
Safe and Caring Schools	Safe and Caring	87.1	90.6	89.4	89.0	89.0	89.3	High	Maintained	Good
Student Learning Opportunities	Program of Studies	71.7	66.8	67.2	82.2	81.8	81.9	Low	Maintained	Issue
	Education Quality	93.2	93.0	93.1	90.2	90.0	90.1	Very High	Maintained	Excellent
Student Learning Achievement (Grades K-9)	PAT: Acceptable	73.9	82.4	77.9	73.8	73.6	73.6	Intermediate	Maintained	Acceptable
	PAT: Excellence	17.0	10.3	14.3	20.6	19.9	19.6	Intermediate	Maintained	Acceptable
	Work Preparation	85.0	91.7	93.5	83.0	82.4	82.6	High	Maintained	Good
	Citizenship	83.3	85.2	83.9	82.9	83.0	83.5	Very High	Maintained	Excellent
Parental Involvement	Parental Involvement	92.0	92.5	90.6	81.3	81.2	81.1	Very High	Maintained	Excellent
Continuous Improvement	School Improvement	72.7	87.2	88.6	81.0	80.3	81.0	Intermediate	Declined Significantly	Issue

Notes:

## Measure Evaluation Reference

### Achievement Evaluation

Achievement evaluation is based upon a comparison of Current Year data to a set of standards that remain consistent over time. The Standards are calculated by taking the 3-year average of baseline data for each measure across all school jurisdictions and calculating the 5th, 25th, 75th and 95th percentiles. Once calculated, these standards remain in place from year to year to allow for consistent planning and evaluation.

The table below shows the range of values defining the 5 achievement evaluation levels for each measure.

Measure	Very Low	Low	Intermediate	High	Very High
Safe and Caring	0.00 - 77.62	77.62 - 81.05	81.05 - 84.50	84.50 - 88.03	88.03 - 100.00
Program of Studies	0.00 - 66.31	66.31 - 72.65	72.65 - 78.43	78.43 - 81.59	81.59 - 100.00
Education Quality	0.00 - 80.94	80.94 - 84.23	84.23 - 87.23	87.23 - 89.60	89.60 - 100.00
Drop Out Rate	100.00 - 9.40	9.40 - 6.90	6.90 - 4.27	4.27 - 2.79	2.79 - 0.00
High School Completion Rate (3 yr)	0.00 - 57.03	57.03 - 62.36	62.36 - 73.88	73.88 - 81.79	81.79 - 100.00
PAT: Acceptable	0.00 - 66.07	66.07 - 70.32	70.32 - 79.81	79.81 - 84.64	84.64 - 100.00
PAT: Excellence	0.00 - 9.97	9.97 - 13.44	13.44 - 19.56	19.56 - 25.83	25.83 - 100.00
Diploma: Acceptable	0.00 - 71.45	71.45 - 78.34	78.34 - 84.76	84.76 - 87.95	87.95 - 100.00
Diploma: Excellence	0.00 - 9.55	9.55 - 12.59	12.59 - 19.38	19.38 - 23.20	23.20 - 100.00
Diploma Exam Participation Rate (4+ Exams)	0.00 - 31.10	31.10 - 44.11	44.11 - 55.78	55.78 - 65.99	65.99 - 100.00
Rutherford Scholarship Eligibility Rate	0.00 - 47.98	47.98 - 55.78	55.78 - 68.95	68.95 - 74.96	74.96 - 100.00
Transition Rate (6 yr)	0.00 - 39.80	39.80 - 46.94	46.94 - 56.15	56.15 - 68.34	68.34 - 100.00
Work Preparation	0.00 - 66.92	66.92 - 72.78	72.78 - 77.78	77.78 - 86.13	86.13 - 100.00
Citizenship	0.00 - 66.30	66.30 - 71.63	71.63 - 77.50	77.50 - 81.08	81.08 - 100.00
Parental Involvement	0.00 - 70.76	70.76 - 74.58	74.58 - 78.50	78.50 - 82.30	82.30 - 100.00
School Improvement	0.00 - 65.25	65.25 - 70.85	70.85 - 76.28	76.28 - 80.41	80.41 - 100.00

Notes:

- 1) For all measures except Drop Out Rate: The range of values at each evaluation level is interpreted as greater than or equal to the lower value, and less than the higher value. For the Very High evaluation level, values range from greater than or equal to the lower value to 100%.
- 2) Drop Out Rate measure: As "Drop Out Rate" is inverse to most measures (i.e. lower values are "better"), the range of values at each evaluation level is interpreted as greater than the lower value and less than or equal to the higher value. For the Very High evaluation level, values range from 0% to less than or equal to the higher value.

### Improvement Table

For each jurisdiction, improvement evaluation consists of comparing the Current Year result for each measure with the previous three-year average. A chi-square statistical test is used to determine the significance of the improvement. This test takes into account the size of the jurisdiction in the calculation to make improvement evaluation fair across jurisdictions of different sizes.

The table below shows the definition of the 5 improvement evaluation levels based upon the chi-square result.

Evaluation Category	Chi-Square Range
Declined Significantly	3.84 + (current < previous 3-year average)
Declined	1.00 - 3.83 (current < previous 3-year average)
Maintained	less than 1.00
Improved	1.00 - 3.83 (current > previous 3-year average)
Improved Significantly	3.84 + (current > previous 3-year average)

### Overall Evaluation Table

The overall evaluation combines the Achievement Evaluation and the Improvement Evaluation. The table below illustrates how the Achievement and Improvement evaluations are combined to get the overall evaluation.

Improvement	Achievement				
	Very High	High	Intermediate	Low	Very Low
Improved Significantly	Excellent	Good	Good	Good	Acceptable
Improved	Excellent	Good	Good	Acceptable	Issue
Maintained	Excellent	Good	Acceptable	Issue	Concern
Declined	Good	Acceptable	Issue	Issue	Concern
Declined Significantly	Acceptable	Issue	Issue	Concern	Concern

### Category Evaluation

The category evaluation is an average of the Overall Evaluation of the measures that make up the category. For the purpose of the calculation, consider an Overall Evaluation of Excellent to be 2, Good to be 1, Acceptable to be 0, Issue to be -1, and Concern to be -2. The simple average (mean) of these values rounded to the nearest integer produces the Category Evaluation value. This is converted back to a colour using the same scale above (e.g. 2=Excellent, 1=Good, 0=Intermediate, -1=Issue, -2=Concern)

**Outcome: Alberta's students are successful**

Performance Measure	Results (in percentages)					Target	Evaluation			Targets		
	2015	2016	2017	2018	2019	2019	Achievement	Improvement	Overall	2020	2021	2022
Overall percentage of students in Grades 6 and 9 who achieved the acceptable standard on Provincial Achievement Tests (overall cohort results).	57.1	76.3	75.0	82.4	73.9	<b>75</b>	Intermediate	Maintained	Acceptable	<b>77</b>	<b>79</b>	<b>80</b>
Overall percentage of students in Grades 6 and 9 who achieved the standard of excellence on Provincial Achievement Tests (overall cohort results).	0.0	13.8	18.8	10.3	17.0	<b>12</b>	Intermediate	Maintained	Acceptable	<b>13</b>	<b>14</b>	<b>15</b>

**Comment on Results**  
*This goal was maintained. We are always looking for ways to improve student achievement. Teachers are reflective in their practice and the data supplied by Alberta Education and through Dossier, help us to assess results in a way that can help us plan for the future. All teachers are a part of this process, even if they do not teach a grade that has PATs.*

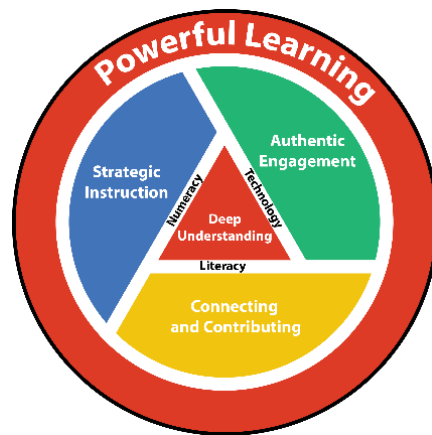
**Strategies**

***At Carbon School, we continue to develop the whole child. Our staff has done a commendable job of using our core values: Integrity, Cooperation, Perseverance, Empathy and Personal Excellence, to underscore our programming. Students are familiar with terms such as "Growth Mindset" and "Mindfulness".***

***We will develop the core competencies by connecting curriculum, learning opportunities, and assessment.***

***All staff at Carbon School actively engage in professional development and expose our students to many learning opportunities in a safe and inclusive environment.***

***This plan addresses all the parts of Powerful Learning as set out by Golden Hills School Division.***

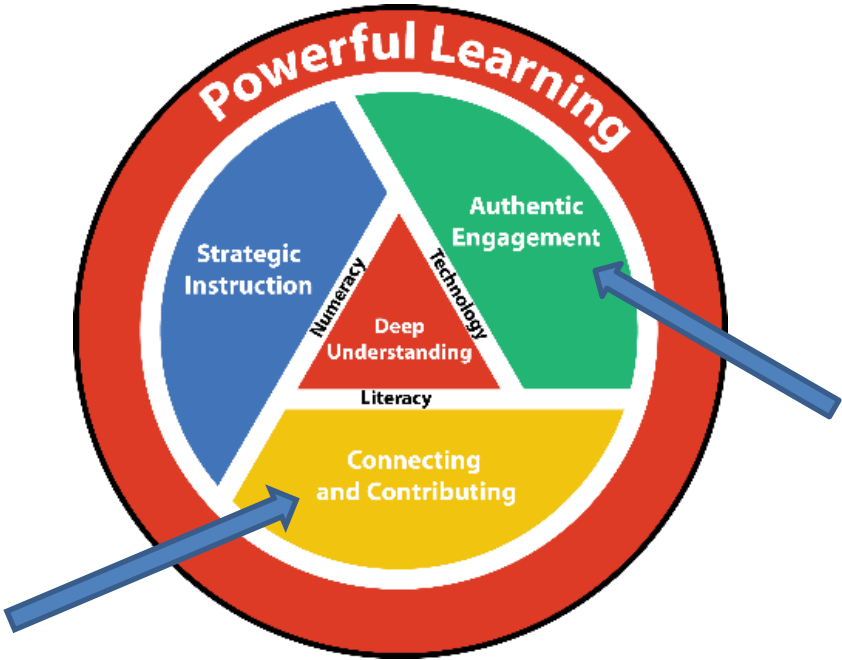


**Outcome: Alberta’s students are successful (continued)**

Performance Measure	Results (in percentages)					Target	Evaluation			Targets		
	2015	2016	2017	2018	2019	2019	Achievement	Improvement	Overall	2020	2021	2022
Percentage of teachers, parents and students who are satisfied that students model the characteristics of active citizenship.	84.8	83.8	82.6	85.2	83.3	<b>85</b>	Very High	Maintained	Excellent	<b>86</b>	<b>86</b>	<b>86</b>

**Comment on Results**  
*Carbon School continues to show success in this outcome.*

**Strategies**  
*Teachers continue to work on developing the “whole child” through activities that involve mindfulness and growth mindset. Students are encouraged to volunteer at the school and community level.*  
*Authentic engagement in activities relating to the history of Indigenous Peoples in Canada continues to be a focus. We are very proud of our Cultural Appreciation Centre in our library.*



**Outcome: Alberta has excellent teachers, school leaders, and school authority leaders**

Performance Measure	Results (in percentages)					Target	Evaluation			Targets		
	2015	2016	2017	2018	2019	2019	Achievement	Improvement	Overall	2020	2021	2022
Percentage of teachers, parents and students satisfied with the opportunity for students to receive a broad program of studies including fine arts, career, technology, and health and physical education.	57.5	68.4	66.3	66.8	71.7	72	Low	Maintained	Issue	72	72	72

**Comment on Results**

*Although we had low results last year, our three year trend has continued to improve. I believe that this is not a result of programming for students, but of us not getting our story out to all stakeholders. There are amazing things happening at Carbon School, and we need to share our story.*

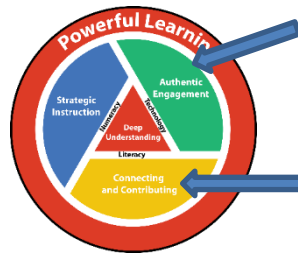
**Strategies**

***We will continue to allow students to have choice and voice in the way they learn and in the way they represent their learning.***

***Teachers are connected to the goals set out by Golden Hills School Division through out Powerful Learning Document. We continue to lead and/or participate in collaborative days and professional development to increase our capacity as educational leaders for both staff and students. All staff members take on leadership roles within our school walls and our division boundaries.***

***We will use more forms of social media. (We currently use our web page intermittently and our Facebook page is used daily.) We will begin using Instagram and Twitter to tell our story. We will be intentional about using these mediums to showcase the learning in our school. #Achieve-Believe-Connect and #PowerfulLearning.***

***We continue to be creative in offering programs that appeal to all interests: STEM Club, Fine Arts Fridays, Technology Tuesdays, Wonder Wednesdays to name a few.***

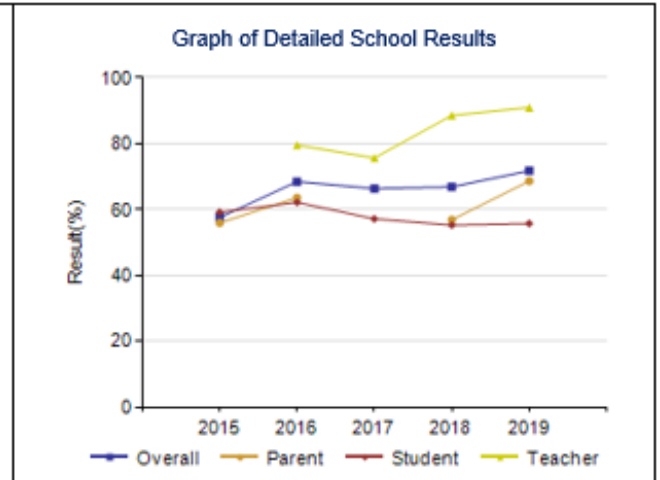
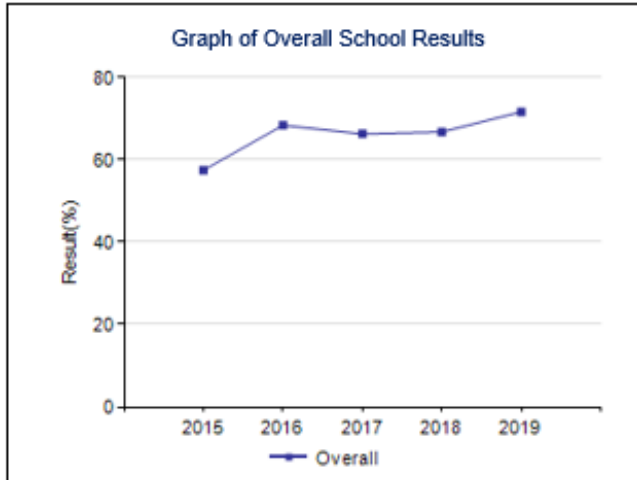


**We are all learners at Carbon School, students and staff alike!**

### Program of Studies – Measure Details

Percentage of teachers, parents and students satisfied with the opportunity for students to receive a broad program of studies including fine arts, career, technology, and health and physical education.

	School					Authority					Province				
	2015	2016	2017	2018	2019	2015	2016	2017	2018	2019	2015	2016	2017	2018	2019
Overall	57.5	68.4	66.3	66.8	71.7	77.9	79.6	81.1	79.0	81.0	81.3	81.9	81.9	81.8	82.2
Teacher	*	79.5	75.6	88.5	90.9	83.5	84.5	87.8	88.0	85.7	87.2	88.1	88.0	88.4	89.1
Parent	55.9	63.5	*	56.8	68.6	75.0	77.3	77.7	76.0	79.2	79.9	80.1	80.1	79.9	80.1
Student	59.1	62.1	57.1	55.2	55.7	75.2	77.1	77.7	73.1	78.2	76.9	77.5	77.7	77.2	77.4



**Although Carbon School's results are lower in this area, we have shown a continuous growing trend over the past five years.**



**Outcome: Alberta's education system is well governed and managed**

Performance Measure	Results (in percentages)					Target	Evaluation			Targets		
	2015	2016	2017	2018	2019	2019	Achievement	Improvement	Overall	2020	2021	2022
Percentage of teacher, parent and student agreement that: students are safe at school, are learning the importance of caring for others, are learning respect for others and are treated fairly in school.	92.3	87.5	90.2	90.6	87.1		High	Maintained	Good	85	86	87
Percentage of teachers, parents and students satisfied with the overall quality of basic education.	92.3	92.3	93.9	93.0	93.2		Very High	Maintained	Excellent	90	90	90
Percentage of teachers and parents who agree that students are taught attitudes and behaviours that will make them successful at work when they finish school.	87.5	88.9	100.0	91.7	85.0		High	Maintained	Good	85	86	87
Percentage of teachers and parents satisfied with parental involvement in decisions about their child's education.	88.1	79.4	100.0	92.5	92.0	87	Very High	Maintained	Excellent	88	89	90
Percentage of teachers, parents and students indicating that their school and schools in their jurisdiction have improved or stayed the same the last three years.	87.5	91.4	87.1	87.2	72.7		Intermediate	Declined Significantly	Issue	80	82	84

**Comment on Results**

*Carbon School rated very well on this goal except for the last qualifier. I am confused about these results given the historical numbers from 2015-2018. We did have a significant cut in staffing for the 2019-2020 school year. This may have attributed to lower results.*

**Strategies**

***Our strategy to address the last category on this chart will be to actively tell our story through different mediums. We use our website and our Facebook page now, but we will expand into Instagram and Twitter this year. Once all stakeholders are informed about the great things happening in Carbon School and in Golden Hills School Division, I am confident we will see an improvement in this area.***

# Carbon School's Operating Budget 2019-2020

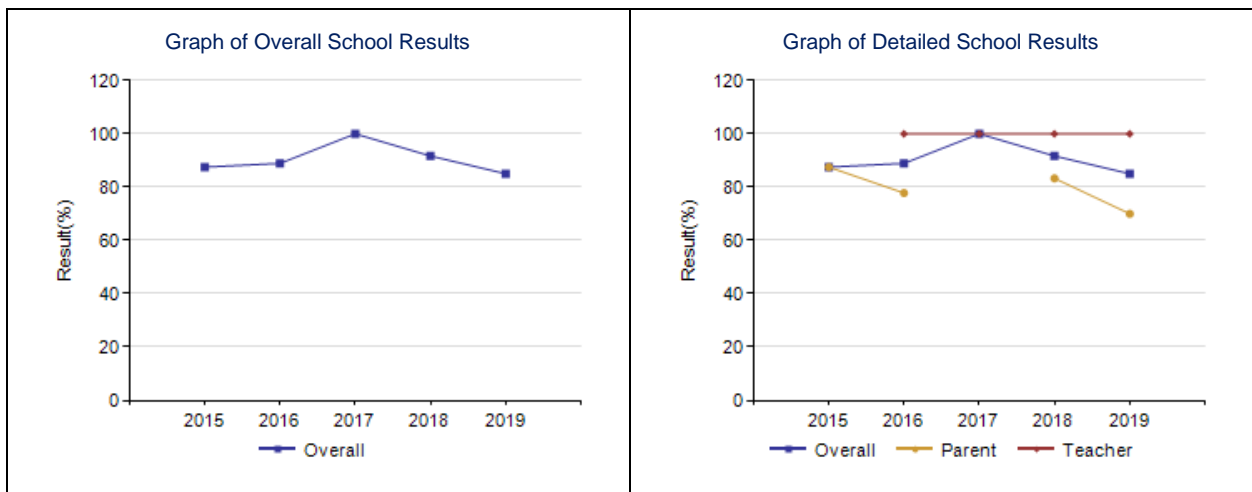
<b>Allocation</b> (includes prior year carry-over)	\$623,721.00	
<b>Staffing</b>		
<b>Certificated</b> (Substitutes & Certificated Staffing)	\$518,438.00	83%
<b>Non-Certificated</b> (Support & Other Staffing)	\$68,910.00	11%
<b>Supplies &amp; Services</b>	\$36,374.00	6%

# Appendix

## Work Preparation – Measure Details

Percentage of teachers and parents who agree that students are taught attitudes and behaviours that will make them successful at work when they finish school.

	School					Authority					Province				
	2015	2016	2017	2018	2019	2015	2016	2017	2018	2019	2015	2016	2017	2018	2019
Overall	87.5	88.9	100.0	91.7	85.0	82.5	85.5	82.3	85.1	86.0	82.0	82.6	82.7	82.4	83.0
Teacher	*	100.0	100.0	100.0	100.0	92.4	94.4	92.2	94.0	95.7	89.7	90.5	90.4	90.3	90.8
Parent	87.5	77.8	*	83.3	70.0	72.7	76.6	72.5	76.3	76.4	74.2	74.8	75.1	74.6	75.2



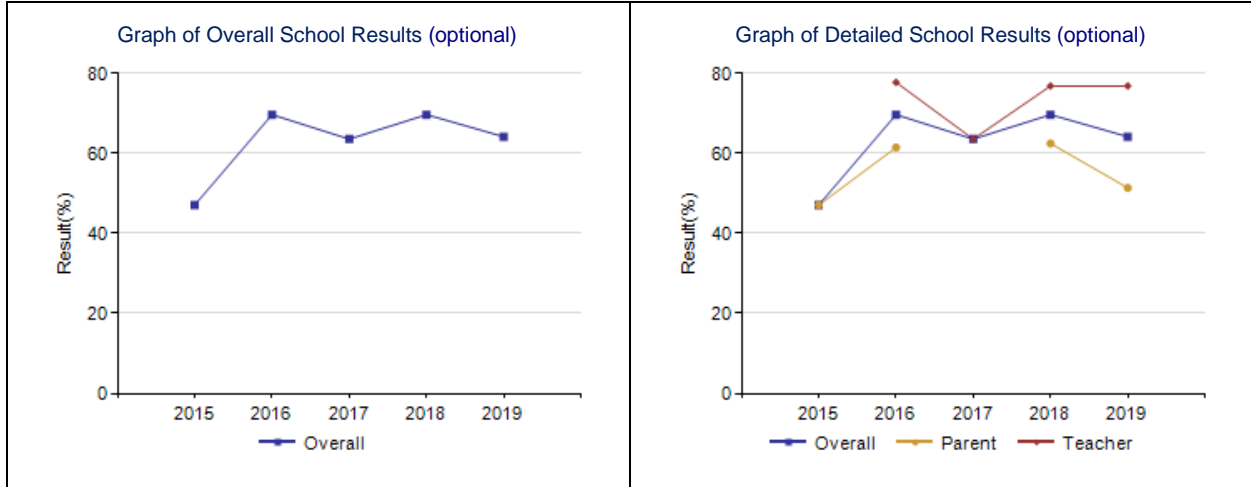
Notes:

1. Data values have been suppressed where the number of respondents/students is fewer than 6. Suppression is marked with an asterisk (\*).

**Lifelong Learning – Measure Details (OPTIONAL)**

Percentage of teacher and parent satisfaction that students demonstrate the knowledge, skills and attitudes necessary for lifelong learning.

	School					Authority					Province				
	2015	2016	2017	2018	2019	2015	2016	2017	2018	2019	2015	2016	2017	2018	2019
Overall	47.1	69.7	63.6	69.7	64.2	71.1	74.6	75.1	73.6	74.2	70.0	70.7	71.0	70.9	71.4
Teacher	*	77.8	63.6	76.9	76.9	80.0	82.2	81.6	83.2	84.1	76.0	77.3	77.3	77.8	78.8
Parent	47.1	61.5	*	62.5	51.4	62.3	67.1	68.5	64.1	64.3	64.0	64.2	64.8	64.0	64.0



Notes:

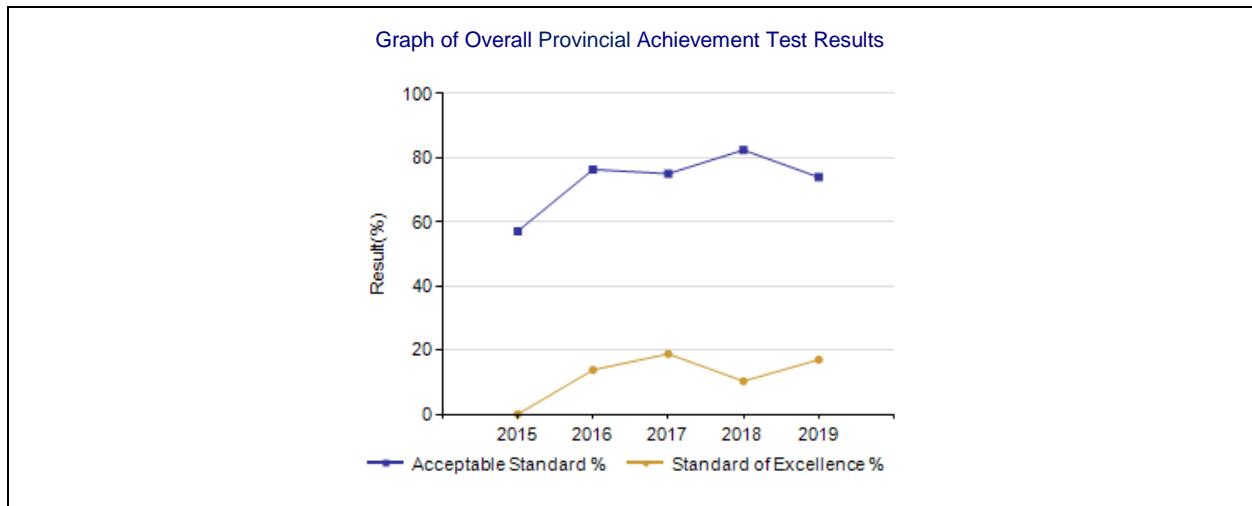
1. Data values have been suppressed where the number of respondents/students is fewer than 6. Suppression is marked with an asterisk (\*).

**Provincial Achievement Test Results – Measure Details**

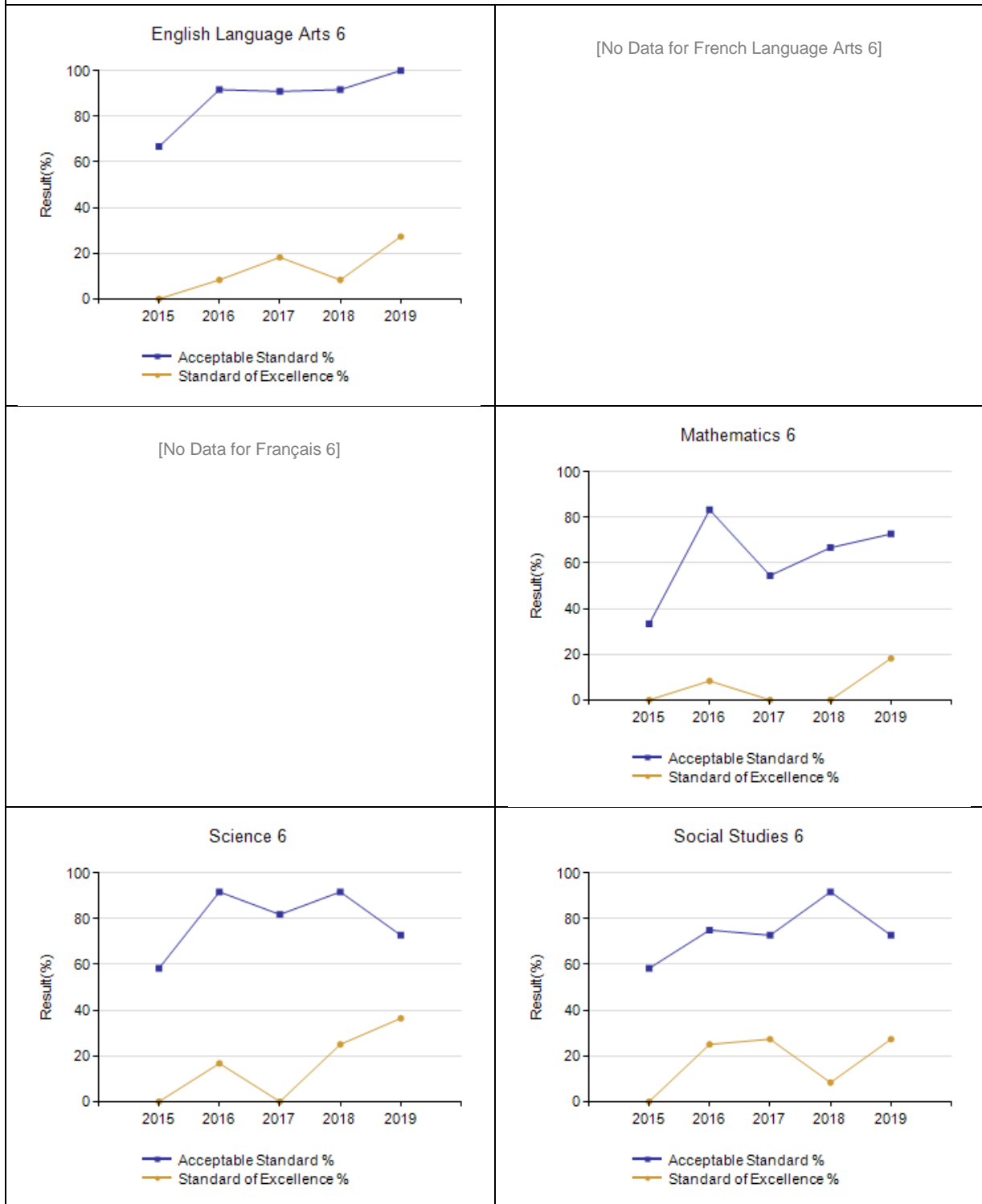
PAT Course by Course Results by Number Enrolled.		Results (in percentages)										Target	
		2015		2016		2017		2018		2019		2019	
		A	E	A	E	A	E	A	E	A	E	A	E
English Language Arts 6	School	66.7	0.0	91.7	8.3	90.9	18.2	91.7	8.3	100.0	27.3		
	Authority	85.7	17.1	84.8	14.0	83.9	14.8	82.0	10.6	83.3	13.6		
	Province	82.8	19.5	82.9	20.4	82.5	18.9	83.5	17.9	83.2	17.8		
French Language Arts 6 année	School	n/a	n/a	n/a	n/a	n/a	n/a	n/a	n/a	n/a	n/a		
	Authority	n/a	n/a	n/a	n/a	n/a	n/a	n/a	n/a	n/a	n/a		
	Province	87.5	13.6	87.7	14.2	85.1	13.5	85.2	12.3	87.7	15.7		
Français 6 année	School	n/a	n/a	n/a	n/a	n/a	n/a	n/a	n/a	n/a	n/a		
	Authority	n/a	n/a	n/a	n/a	n/a	n/a	n/a	n/a	n/a	n/a		
	Province	89.0	15.0	91.4	17.2	92.1	21.6	93.3	23.1	90.3	24.6		
Mathematics 6	School	33.3	0.0	83.3	8.3	54.5	0.0	66.7	0.0	72.7	18.2		
	Authority	73.6	9.7	73.9	11.7	64.6	8.4	73.3	11.2	72.2	12.1		
	Province	73.2	14.1	72.2	14.0	69.4	12.6	72.9	14.0	72.5	15.0		
Science 6	School	58.3	0.0	91.7	16.7	81.8	0.0	91.7	25.0	72.7	36.4		
	Authority	79.9	21.9	76.6	22.6	77.6	24.6	76.2	21.8	77.8	27.0		
	Province	76.3	25.3	78.0	27.1	76.9	29.0	78.8	30.5	77.6	28.6		
Social Studies 6	School	58.3	0.0	75.0	25.0	72.7	27.3	91.7	8.3	72.7	27.3		
	Authority	72.3	19.0	70.6	15.0	67.4	17.9	68.1	13.4	70.4	16.3		
	Province	69.8	18.1	71.4	22.0	72.9	21.7	75.1	23.2	76.2	24.4		
English Language Arts 9	School	*	*	75.0	12.5	88.9	11.1	*	*	81.8	0.0		
	Authority	74.1	12.1	76.1	15.8	74.9	12.9	75.7	10.3	73.1	9.2		
	Province	75.6	14.4	77.0	15.2	76.8	14.9	76.1	14.7	75.1	14.7		
K&E English Language Arts 9	School	n/a	n/a	n/a	n/a	n/a	n/a	n/a	n/a	n/a	n/a		
	Authority	70.0	10.0	73.3	10.0	65.9	9.8	69.0	5.2	66.7	3.0		

	Province	63.0	4.5	59.8	6.2	58.8	5.9	55.7	5.9	57.4	5.4		
French Language Arts 9 année	School	n/a	n/a	n/a	n/a	n/a	n/a	n/a	n/a	n/a	n/a		
	Authority	n/a	n/a	n/a	n/a	n/a	n/a	n/a	n/a	n/a	n/a		
	Province	85.8	10.1	83.0	10.8	83.1	11.2	81.4	9.8	82.9	12.3		
Français 9 année	School	n/a	n/a	n/a	n/a	n/a	n/a	n/a	n/a	n/a	n/a		
	Authority	n/a	n/a	n/a	n/a	n/a	n/a	n/a	n/a	n/a	n/a		
	Province	88.5	20.2	86.4	26.8	88.9	26.1	82.7	22.3	88.6	26.0		
Mathematics 9	School	*	*	62.5	12.5	77.8	33.3	*	*	54.5	0.0		
	Authority	63.7	14.0	65.1	12.6	65.8	16.1	56.7	10.9	54.0	13.4		
	Province	65.3	17.9	67.8	17.5	67.2	19.0	59.2	15.0	60.0	19.0		
K&E Mathematics 9	School	n/a	n/a	n/a	n/a	n/a	n/a	n/a	n/a	n/a	n/a		
	Authority	53.8	23.1	60.3	25.9	71.4	38.1	70.2	29.8	68.4	34.2		
	Province	60.9	14.4	61.2	13.0	57.5	13.3	57.4	13.6	59.6	13.2		
Science 9	School	*	*	62.5	12.5	55.6	33.3	*	*	81.8	18.2		
	Authority	71.6	17.8	73.9	15.4	68.5	16.0	73.3	20.7	69.5	20.0		
	Province	74.1	22.8	74.2	22.4	74.0	21.4	75.7	24.4	75.2	26.4		
K&E Science 9	School	n/a	n/a	n/a	n/a	n/a	n/a	n/a	n/a	n/a	n/a		
	Authority	52.6	10.5	70.7	10.3	74.4	20.5	82.8	8.6	75.9	6.9		
	Province	64.5	15.1	63.8	14.3	63.9	13.3	64.6	12.3	61.7	10.7		
Social Studies 9	School	*	*	50.0	12.5	77.8	33.3	*	*	54.5	9.1		
	Authority	65.1	15.0	62.6	13.8	66.4	18.2	64.8	15.9	61.0	14.2		
	Province	65.1	19.8	64.7	18.0	67.0	20.2	66.7	21.5	68.7	20.6		
K&E Social Studies 9	School	n/a	n/a	n/a	n/a	n/a	n/a	n/a	n/a	n/a	n/a		
	Authority	55.0	7.5	58.6	8.6	58.5	12.2	70.9	12.7	62.1	13.8		
	Province	57.3	11.2	58.0	11.6	56.3	12.7	55.2	14.2	55.9	15.0		

1.



Graph of Provincial Achievement Test Results by Course



Graph of Provincial Achievement Test Results by Course

<p style="text-align: center;"><b>English Language Arts 9</b></p> <table border="1"> <thead> <tr> <th>Year</th> <th>Acceptable Standard %</th> <th>Standard of Excellence %</th> </tr> </thead> <tbody> <tr> <td>2016</td> <td>75</td> <td>12</td> </tr> <tr> <td>2017</td> <td>90</td> <td>10</td> </tr> <tr> <td>2019</td> <td>82</td> <td>0</td> </tr> </tbody> </table>	Year	Acceptable Standard %	Standard of Excellence %	2016	75	12	2017	90	10	2019	82	0	<p>[No Data for English Lang Arts 9 KAE]</p>
Year	Acceptable Standard %	Standard of Excellence %											
2016	75	12											
2017	90	10											
2019	82	0											
<p>[No Data for French Language Arts 9]</p>	<p>[No Data for Français 9]</p>												
<p style="text-align: center;"><b>Mathematics 9</b></p> <table border="1"> <thead> <tr> <th>Year</th> <th>Acceptable Standard %</th> <th>Standard of Excellence %</th> </tr> </thead> <tbody> <tr> <td>2016</td> <td>62</td> <td>12</td> </tr> <tr> <td>2017</td> <td>78</td> <td>32</td> </tr> <tr> <td>2019</td> <td>55</td> <td>0</td> </tr> </tbody> </table>	Year	Acceptable Standard %	Standard of Excellence %	2016	62	12	2017	78	32	2019	55	0	<p>[No Data for Mathematics 9 KAE]</p>
Year	Acceptable Standard %	Standard of Excellence %											
2016	62	12											
2017	78	32											
2019	55	0											

Graph of Provincial Achievement Test Results by Course

<p style="text-align: center;"><b>Science 9</b></p> <p style="text-align: center;">[No Data for Science 9 KAE]</p>	<p style="text-align: center;">[No Data for Science 9 KAE]</p>
<p style="text-align: center;"><b>Social Studies 9</b></p> <p style="text-align: center;">[No Data for Social Studies 9 KAE]</p>	<p style="text-align: center;">[No Data for Social Studies 9 KAE]</p>



PAT Results Course By Course Summary By Enrolled With Measure Evaluation

Course		Measure		Carbon School						Alberta				
				Achievement	Improvement	Overall	2019		Prev 3 Year Average		2019		Prev 3 Year Average	
							N	%	N	%	N	%	N	%
English Language Arts 6	Acceptable Standard	Very High	Maintained	Excellent	11	100.0	12	91.4	54,820	83.2	49,573	82.9		
	Standard of Excellence	Very High	Maintained	Excellent	11	27.3	12	11.6	54,820	17.8	49,573	19.1		
French Language Arts 6 année	Acceptable Standard	n/a	n/a	n/a	n/a	n/a	n/a	n/a	3,559	87.7	3,122	86.0		
	Standard of Excellence	n/a	n/a	n/a	n/a	n/a	n/a	n/a	3,559	15.7	3,122	13.3		
Français 6 année	Acceptable Standard	n/a	n/a	n/a	n/a	n/a	n/a	n/a	663	90.3	574	92.2		
	Standard of Excellence	n/a	n/a	n/a	n/a	n/a	n/a	n/a	663	24.6	574	20.6		
Mathematics 6	Acceptable Standard	Intermediate	Maintained	Acceptable	11	72.7	12	68.2	54,778	72.5	49,502	71.5		
	Standard of Excellence	High	Improved	Good	11	18.2	12	2.8	54,778	15.0	49,502	13.5		
Science 6	Acceptable Standard	Low	Maintained	Issue	11	72.7	12	88.4	54,879	77.6	49,520	77.9		
	Standard of Excellence	Very High	Improved	Excellent	11	36.4	12	13.9	54,879	28.6	49,520	28.9		
Social Studies 6	Acceptable Standard	Intermediate	Maintained	Acceptable	11	72.7	12	79.8	54,802	76.2	49,511	73.1		
	Standard of Excellence	High	Maintained	Good	11	27.3	12	20.2	54,802	24.4	49,511	22.3		
English Language Arts 9	Acceptable Standard	Intermediate	Maintained	Acceptable	11	81.8	9	81.9	47,465	75.1	45,363	76.6		
	Standard of Excellence	Very Low	Declined	Concern	11	0.0	9	11.8	47,465	14.7	45,363	14.9		
K&E English Language Arts 9	Acceptable Standard	n/a	n/a	n/a	n/a	n/a	n/a	n/a	1,569	57.4	1,551	58.1		
	Standard of Excellence	n/a	n/a	n/a	n/a	n/a	n/a	n/a	1,569	5.4	1,551	6.0		
French Language Arts 9 année	Acceptable Standard	n/a	n/a	n/a	n/a	n/a	n/a	n/a	2,811	82.9	2,758	82.5		
	Standard of Excellence	n/a	n/a	n/a	n/a	n/a	n/a	n/a	2,811	12.3	2,758	10.6		
Français 9 année	Acceptable Standard	n/a	n/a	n/a	n/a	n/a	n/a	n/a	396	88.6	380	86.0		
	Standard of Excellence	n/a	n/a	n/a	n/a	n/a	n/a	n/a	396	26.0	380	25.1		
Mathematics 9	Acceptable Standard	Low	Maintained	Issue	11	54.5	9	70.1	46,764	60.0	44,959	64.7		
	Standard of Excellence	Very Low	Declined	Concern	11	0.0	9	22.9	46,764	19.0	44,959	17.1		
K&E Mathematics 9	Acceptable Standard	n/a	n/a	n/a	n/a	n/a	n/a	n/a	2,190	59.6	2,007	58.7		
	Standard of Excellence	n/a	n/a	n/a	n/a	n/a	n/a	n/a	2,190	13.2	2,007	13.3		
Science 9	Acceptable Standard	Very High	Improved	Excellent	11	81.8	9	59.0	47,489	75.2	45,363	74.6		
	Standard of Excellence	Very High	Maintained	Excellent	11	18.2	9	22.9	47,489	26.4	45,363	22.7		
K&E Science 9	Acceptable Standard	n/a	n/a	n/a	n/a	n/a	n/a	n/a	1,536	61.7	1,520	64.1		
	Standard of Excellence	n/a	n/a	n/a	n/a	n/a	n/a	n/a	1,536	10.7	1,520	13.3		
Social Studies 9	Acceptable Standard	Very Low	Maintained	Concern	11	54.5	9	63.9	47,496	68.7	45,366	66.1		
	Standard of Excellence	Very Low	Maintained	Concern	11	9.1	9	22.9	47,496	20.6	45,366	19.9		
K&E Social Studies 9	Acceptable Standard	n/a	n/a	n/a	n/a	n/a	n/a	n/a	1,466	55.9	1,501	56.5		
	Standard of Excellence	n/a	n/a	n/a	n/a	n/a	n/a	n/a	1,466	15.0	1,501	12.8		

### Measure Evaluation Reference - Achievement Evaluation

Achievement evaluation is based upon a comparison of Current Year data to a set of standards that remain consistent over time. The Standards are calculated by taking the 3-year average of baseline data for each measure across all school jurisdictions and calculating the 5th, 25th, 75th, and 95th percentiles. Once calculated, these standards remain in place from year to year to allow for consistent planning and evaluation.

The table below shows the range of values defining the 5 achievement evaluation levels for each measure.

Course	Measure	Very Low	Low	Intermediate	High	Very High
English Language Arts 6	Acceptable Standard	0.00 - 67.95	67.95 - 78.40	78.40 - 86.09	86.09 - 91.37	91.37 - 100.00
	Standard of Excellence	0.00 - 6.83	6.83 - 11.65	11.65 - 17.36	17.36 - 22.46	22.46 - 100.00
French Language Arts 6 année	Acceptable Standard	0.00 - 41.69	41.69 - 73.54	73.54 - 92.32	92.32 - 97.93	97.93 - 100.00
	Standard of Excellence	0.00 - 2.72	2.72 - 8.13	8.13 - 15.29	15.29 - 23.86	23.86 - 100.00
Mathematics 6	Acceptable Standard	0.00 - 63.91	63.91 - 70.73	70.73 - 79.61	79.61 - 88.67	88.67 - 100.00
	Standard of Excellence	0.00 - 8.53	8.53 - 11.31	11.31 - 18.13	18.13 - 25.17	25.17 - 100.00
Science 6	Acceptable Standard	0.00 - 60.36	60.36 - 78.51	78.51 - 86.46	86.46 - 90.64	90.64 - 100.00
	Standard of Excellence	0.00 - 11.74	11.74 - 17.42	17.42 - 25.34	25.34 - 34.31	34.31 - 100.00
Social Studies 6	Acceptable Standard	0.00 - 58.97	58.97 - 68.15	68.15 - 76.62	76.62 - 83.55	83.55 - 100.00
	Standard of Excellence	0.00 - 7.30	7.30 - 12.45	12.45 - 19.08	19.08 - 30.09	30.09 - 100.00
English Language Arts 9	Acceptable Standard	0.00 - 63.55	63.55 - 75.66	75.66 - 83.70	83.70 - 90.27	90.27 - 100.00
	Standard of Excellence	0.00 - 5.96	5.96 - 9.43	9.43 - 14.72	14.72 - 20.46	20.46 - 100.00
K&E English Language Arts 9	Acceptable Standard	0.00 - 29.97	29.97 - 53.86	53.86 - 76.19	76.19 - 91.85	91.85 - 100.00
	Standard of Excellence	0.00 - 0.00	0.00 - 0.30	0.30 - 10.00	10.00 - 20.31	20.31 - 100.00
French Language Arts 9 année	Acceptable Standard	0.00 - 67.59	67.59 - 81.33	81.33 - 92.06	92.06 - 97.26	97.26 - 100.00
	Standard of Excellence	0.00 - 1.67	1.67 - 6.81	6.81 - 17.11	17.11 - 28.68	28.68 - 100.00
Mathematics 9	Acceptable Standard	0.00 - 52.42	52.42 - 60.73	60.73 - 73.88	73.88 - 78.00	78.00 - 100.00
	Standard of Excellence	0.00 - 8.18	8.18 - 12.49	12.49 - 18.10	18.10 - 24.07	24.07 - 100.00
K&E Mathematics 9	Acceptable Standard	0.00 - 28.14	28.14 - 53.85	53.85 - 75.83	75.83 - 94.44	94.44 - 100.00
	Standard of Excellence	0.00 - 0.00	0.00 - 6.07	6.07 - 20.43	20.43 - 31.67	31.67 - 100.00
Science 9	Acceptable Standard	0.00 - 50.57	50.57 - 60.14	60.14 - 72.50	72.50 - 76.89	76.89 - 100.00
	Standard of Excellence	0.00 - 3.39	3.39 - 6.71	6.71 - 11.81	11.81 - 15.85	15.85 - 100.00
K&E Science 9	Acceptable Standard	0.00 - 38.75	38.75 - 59.30	59.30 - 78.33	78.33 - 87.58	87.58 - 100.00
	Standard of Excellence	0.00 - 0.00	0.00 - 7.47	7.47 - 21.41	21.41 - 40.82	40.82 - 100.00
Social Studies 9	Acceptable Standard	0.00 - 56.26	56.26 - 62.27	62.27 - 74.04	74.04 - 79.85	79.85 - 100.00
	Standard of Excellence	0.00 - 10.03	10.03 - 12.78	12.78 - 19.76	19.76 - 24.03	24.03 - 100.00
K&E Social Studies 9	Acceptable Standard	0.00 - 38.79	38.79 - 53.82	53.82 - 72.42	72.42 - 84.88	84.88 - 100.00
	Standard of Excellence	0.00 - 0.00	0.00 - 5.71	5.71 - 17.19	17.19 - 36.26	36.26 - 100.00

### Improvement Table

For each jurisdiction, improvement evaluation consists of comparing the Current Year result for each measure with the previous three-year average. A chi-square statistical test is used to determine the significance of the improvement. This test takes into account the size of the jurisdiction in the calculation to make improvement evaluation fair across jurisdictions of different sizes.

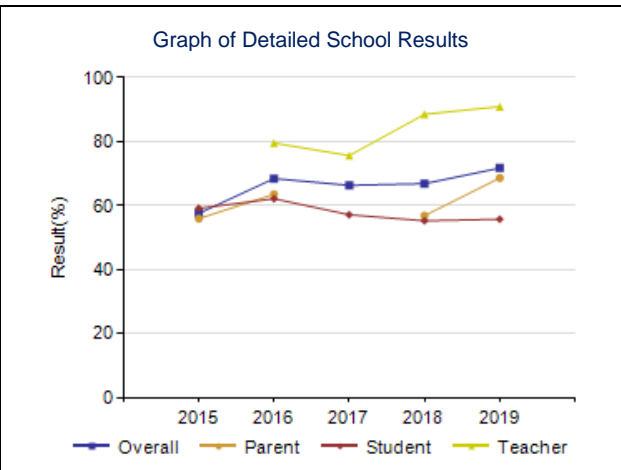
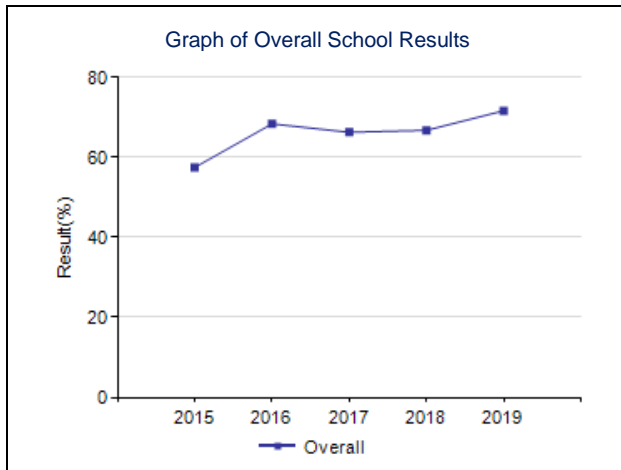
The table below shows the definition of the 5 improvement evaluation levels based upon the chi-square result.

Evaluation Category	Chi-Square Range
Declined Significantly	3.84 + (current < previous 3-year average)
Declined	1.00 - 3.83 (current < previous 3-year average)
Maintained	less than 1.00
Improved	1.00 - 3.83 (current > previous 3-year average)
Improved Significantly	3.84 + (current > previous 3-year average)

**Program of Studies – Measure Details**

Percentage of teachers, parents and students satisfied with the opportunity for students to receive a broad program of studies including fine arts, career, technology, and health and physical education.

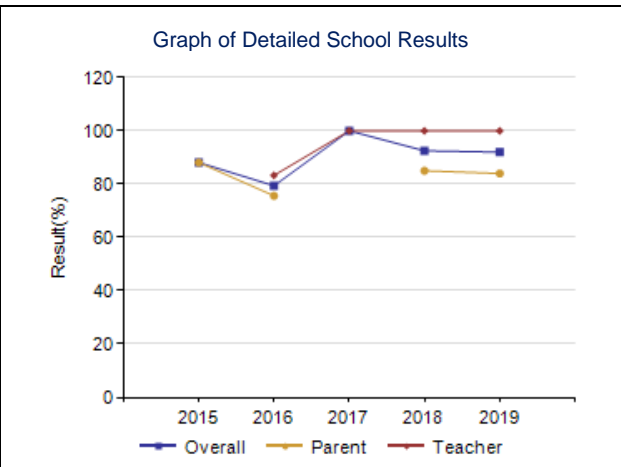
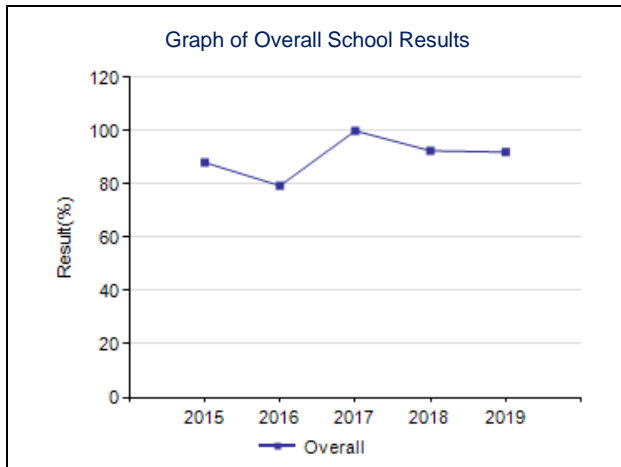
	School					Authority					Province				
	2015	2016	2017	2018	2019	2015	2016	2017	2018	2019	2015	2016	2017	2018	2019
Overall	57.5	68.4	66.3	66.8	71.7	77.9	79.6	81.1	79.0	81.0	81.3	81.9	81.9	81.8	82.2
Teacher	*	79.5	75.6	88.5	90.9	83.5	84.5	87.8	88.0	85.7	87.2	88.1	88.0	88.4	89.1
Parent	55.9	63.5	*	56.8	68.6	75.0	77.3	77.7	76.0	79.2	79.9	80.1	80.1	79.9	80.1
Student	59.1	62.1	57.1	55.2	55.7	75.2	77.1	77.7	73.1	78.2	76.9	77.5	77.7	77.2	77.4



**Parental Involvement – Measure Details**

Percentage of teachers and parents satisfied with parental involvement in decisions about their child's education.

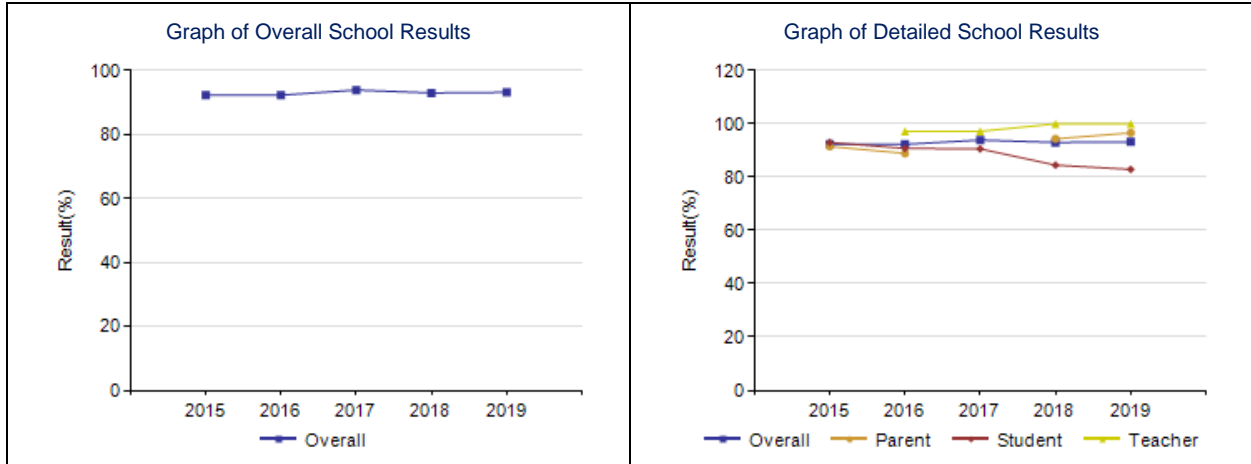
	School					Authority					Province				
	2015	2016	2017	2018	2019	2015	2016	2017	2018	2019	2015	2016	2017	2018	2019
Overall	88.1	79.4	100.0	92.5	92.0	79.4	80.3	84.4	81.6	82.5	80.7	80.9	81.2	81.2	81.3
Teacher	*	83.3	100.0	100.0	100.0	87.9	87.8	91.5	90.0	92.1	88.1	88.4	88.5	88.9	89.0
Parent	88.1	75.6	*	85.0	84.0	70.9	72.8	77.3	73.1	72.8	73.4	73.5	73.9	73.4	73.6



**Education Quality – Measure Details**

Percentage of teachers, parents and students satisfied with the overall quality of basic education.

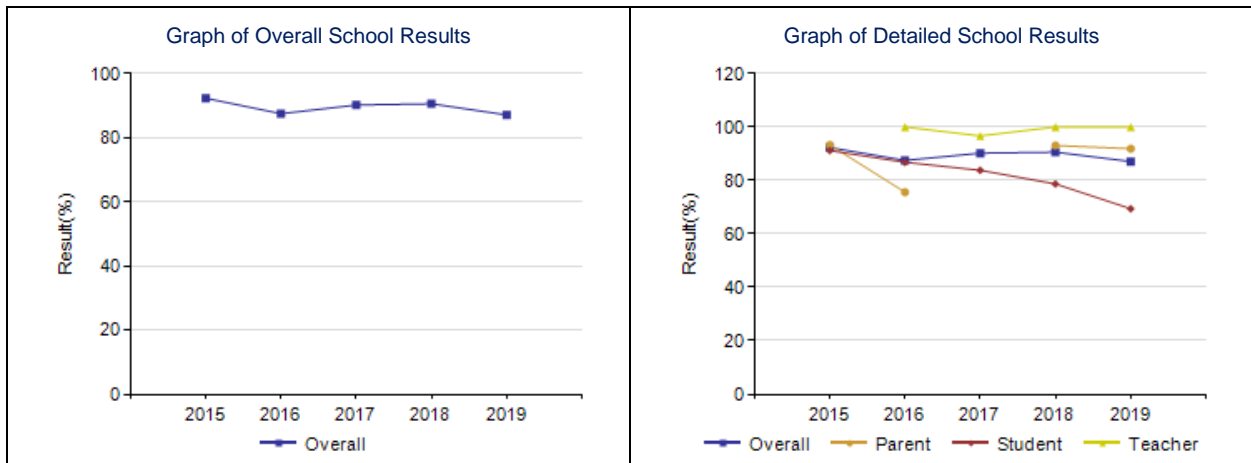
	School					Authority					Province				
	2015	2016	2017	2018	2019	2015	2016	2017	2018	2019	2015	2016	2017	2018	2019
Overall	92.3	92.3	93.9	93.0	93.2	90.7	92.1	92.4	92.0	92.1	89.5	90.1	90.1	90.0	90.2
Teacher	*	97.2	97.2	100.0	100.0	95.7	98.0	98.3	97.8	98.1	95.9	96.0	95.9	95.8	96.1
Parent	91.5	88.9	*	94.4	96.6	86.4	87.9	88.4	87.8	88.7	85.4	86.1	86.4	86.0	86.4
Student	93.0	90.8	90.6	84.5	82.9	89.9	90.5	90.5	90.3	89.6	87.4	88.0	88.1	88.2	88.1



**Safe and Caring – Measure Details**

Percentage of teacher, parent and student agreement that: students are safe at school, are learning the importance of caring for others, are learning respect for others and are treated fairly in school.

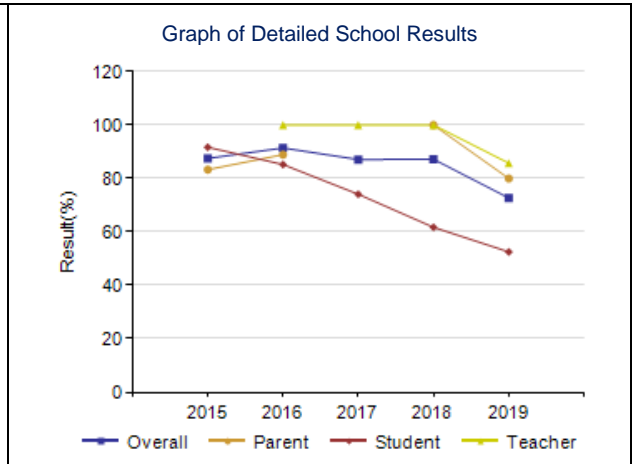
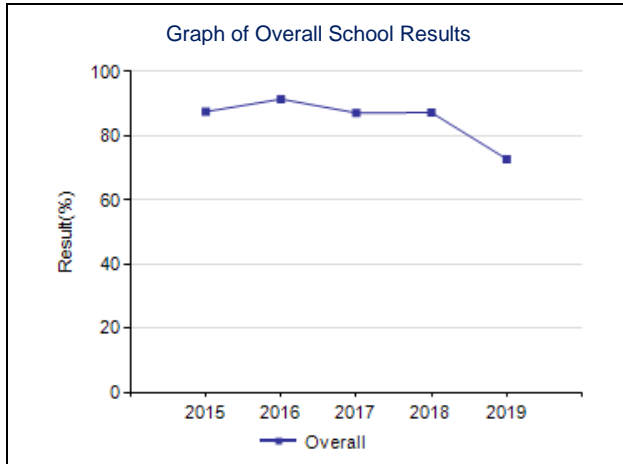
	School					Authority					Province				
	2015	2016	2017	2018	2019	2015	2016	2017	2018	2019	2015	2016	2017	2018	2019
Overall	92.3	87.5	90.2	90.6	87.1	90.2	90.9	91.2	90.6	90.6	89.2	89.5	89.5	89.0	89.0
Teacher	*	100.0	96.7	100.0	100.0	95.3	96.7	96.9	97.5	96.8	95.4	95.4	95.3	95.0	95.1
Parent	93.3	75.6	*	93.1	91.9	89.6	89.2	90.3	89.8	91.5	89.3	89.8	89.9	89.4	89.7
Student	91.2	86.8	83.8	78.7	69.4	85.8	86.8	86.5	84.6	83.6	83.0	83.4	83.3	82.5	82.3



**School Improvement – Measure Details**

Percentage of teachers, parents and students indicating that their school and schools in their jurisdiction have improved or stayed the same the last three years.

	School					Authority					Province				
	2015	2016	2017	2018	2019	2015	2016	2017	2018	2019	2015	2016	2017	2018	2019
Overall	87.5	91.4	87.1	87.2	72.7	82.8	86.3	88.0	83.0	84.7	79.6	81.2	81.4	80.3	81.0
Teacher	*	100.0	100.0	100.0	85.7	84.5	90.3	88.5	86.2	85.5	79.8	82.3	82.2	81.5	83.4
Parent	83.3	88.9	*	100.0	80.0	78.0	81.7	88.5	79.3	84.0	78.5	79.7	80.8	79.3	80.3
Student	91.7	85.2	74.1	61.7	52.5	85.9	86.8	86.9	83.4	84.4	80.7	81.5	81.1	80.2	79.4



1.